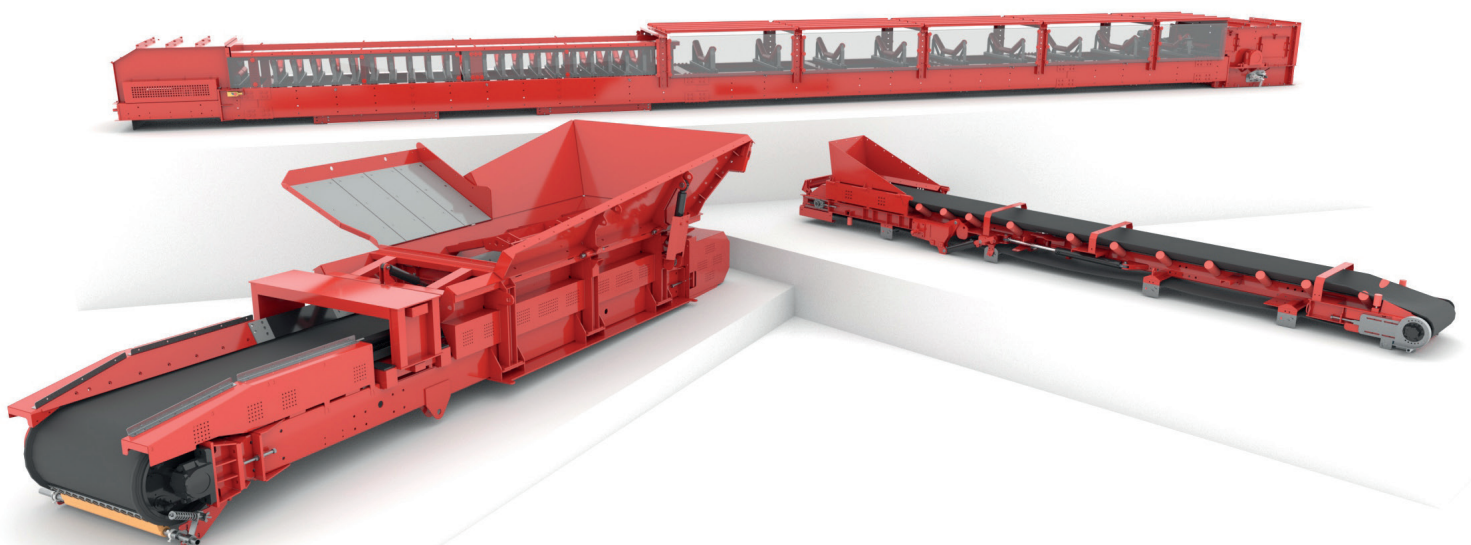


**SWISS POWER**



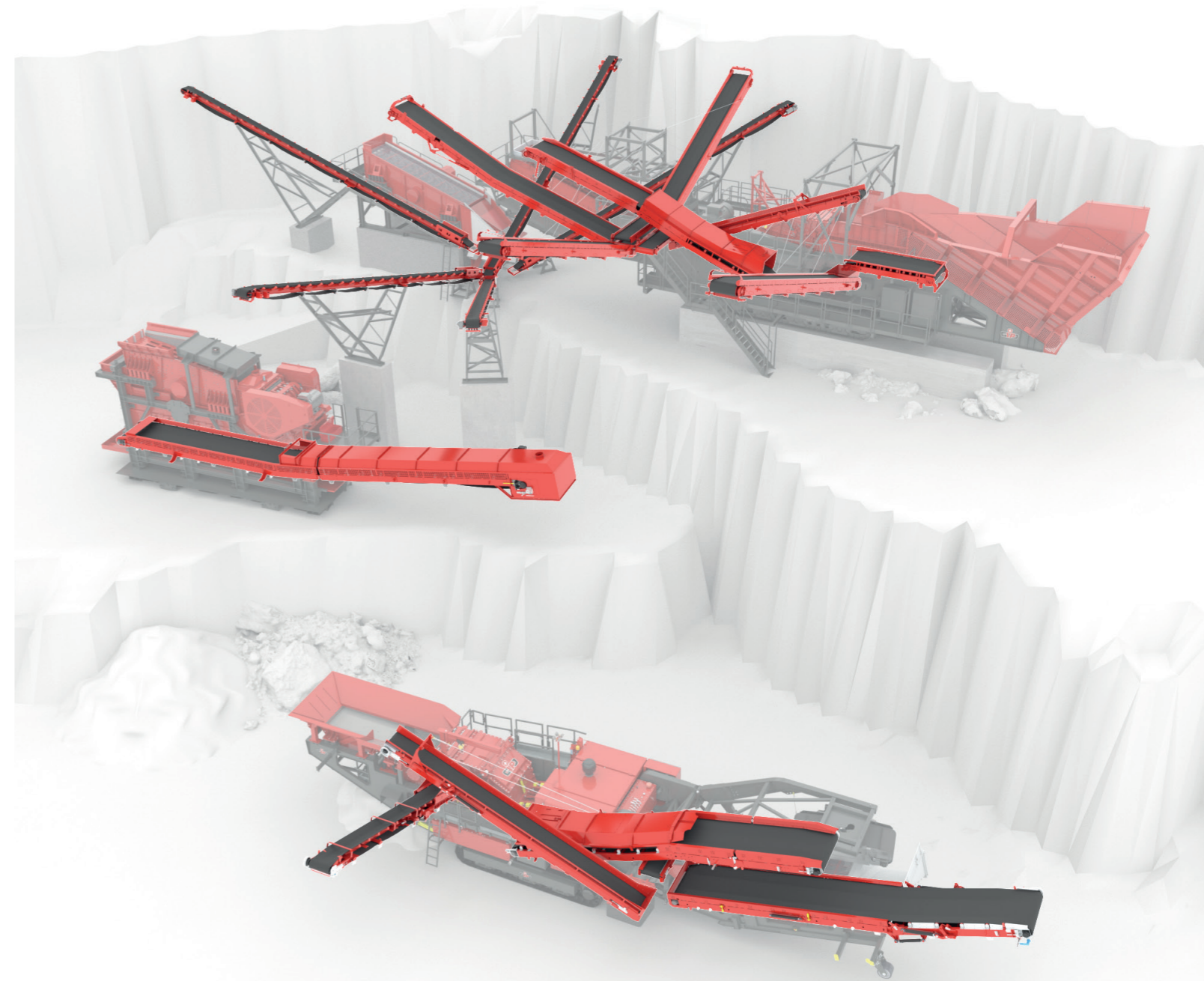
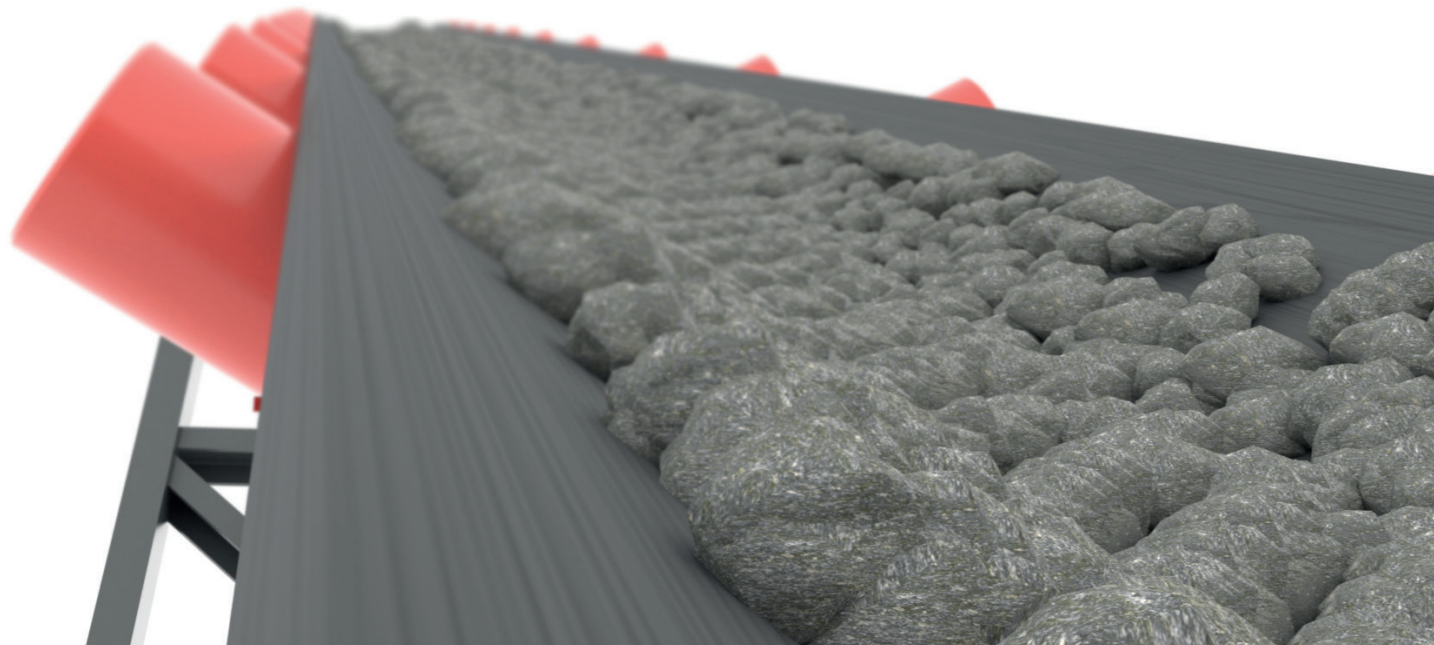
**CONVEYOR BELT**



## CONVEYOR BELT – EFFICIENCY IN MOTION



Conveyor belts are the unassuming heroes that transport goods, commodities and products seamlessly and reliably from A to B. Their technology is revolutionising industry, ensuring smooth processes and maximising productivity. Discover the world of conveyor belts where innovation meets motion and logistics reach a new dimension.



“ EFFICIENT CONVEYOR BELTS:  
WE MOVE THE WORLD FOR YOU! ”

## CONVEYOR BELTS

# FOR ALL APPLICATIONS



### QUARRYING

Our plants are used in quarries to crush, screen and process a wide range of materials where they operate without problems, even in very demanding conditions.



### RECYCLING

The plants in recycling centres process construction site waste, building rubble and other materials. They can also process and transport materials such as ballast and asphalt.



### CHIPPINGS AND GRAVEL WORKS

GIPO plants are also present in chippings and gravel works where they are used to extract and process gravel, crushed stone and other materials necessary for the construction industry.



### TUNNEL CONSTRUCTION AND MINING

GIPO plants play a crucial role in the efficiency and sustainability of tunnel construction projects: they help to process materials, optimise transport processes and minimise the effects on the environment.



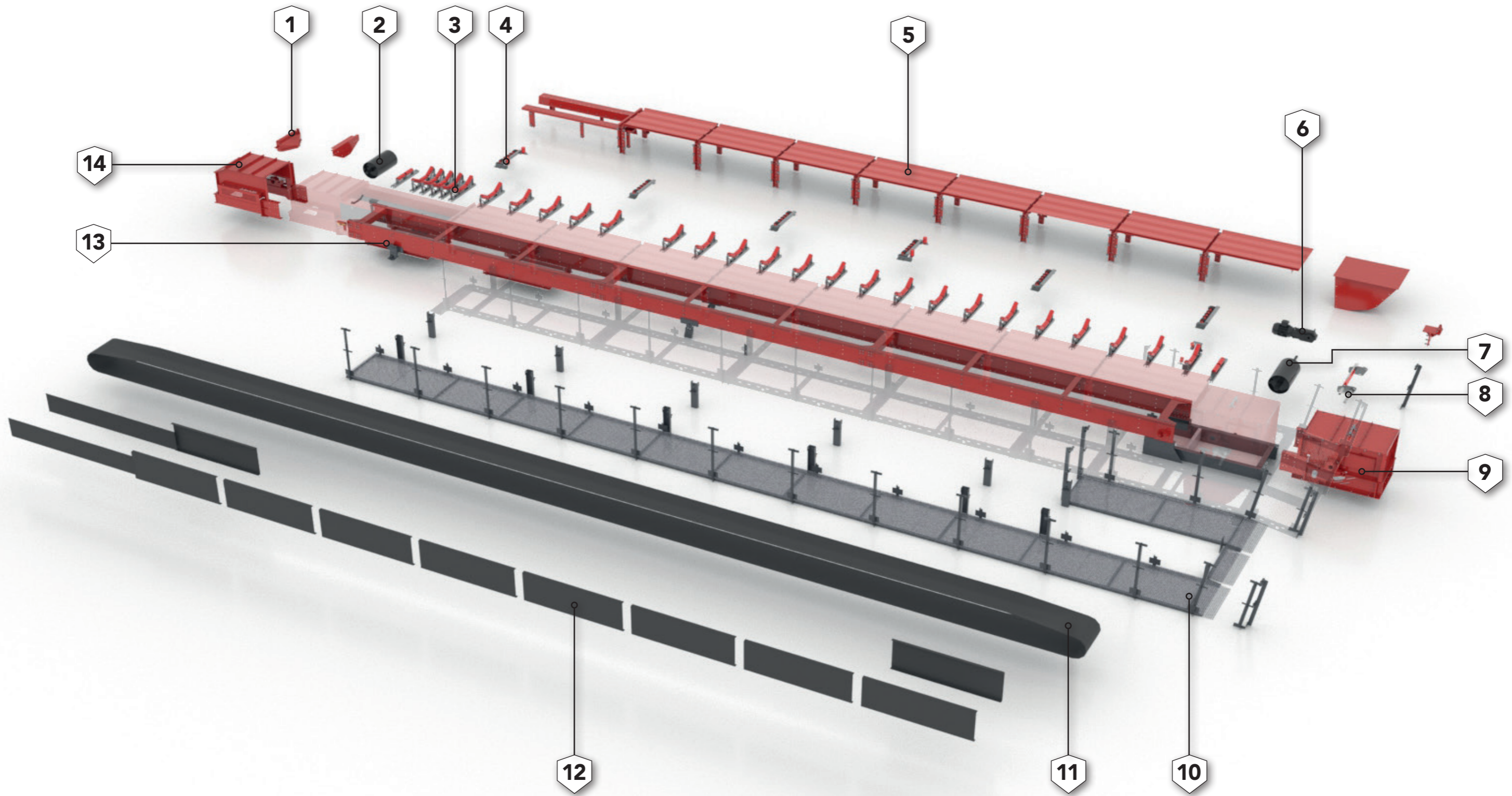
### WASTE MANAGEMENT

Stationary plants can be used on landfill sites as well as in slag processing to crush, sort and process waste.



### INDUSTRIAL APPLICATIONS

Our plants are used in numerous industrial processes: here they make it possible to process raw materials and contribute to the optimisation of workflows.



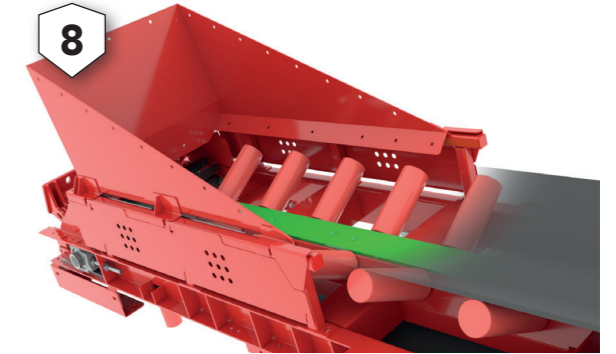
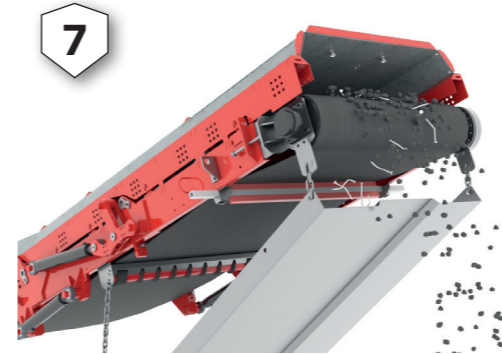
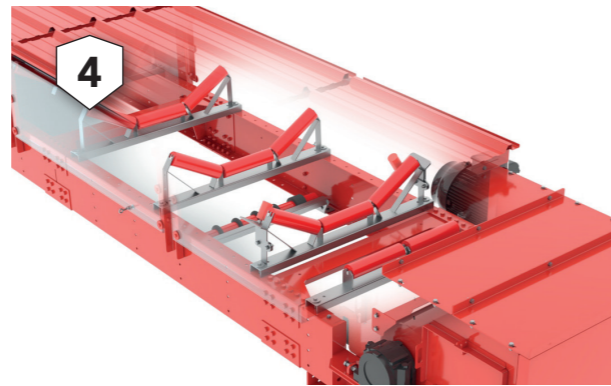
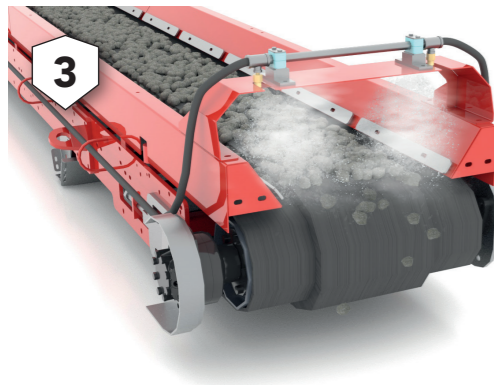
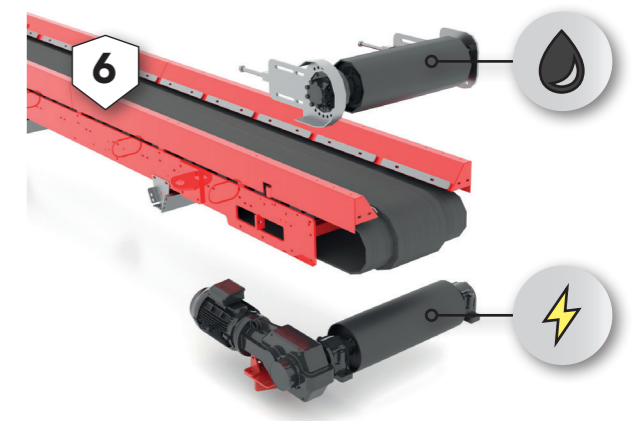
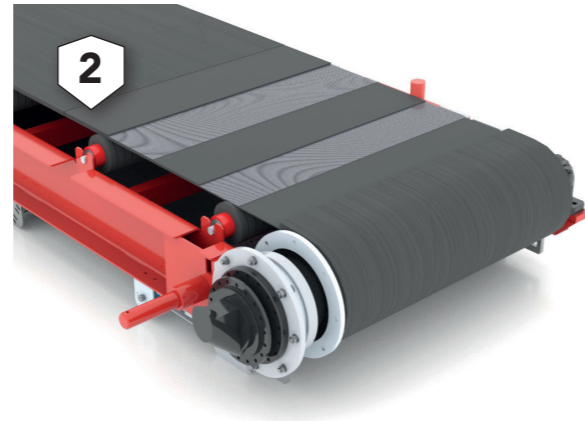
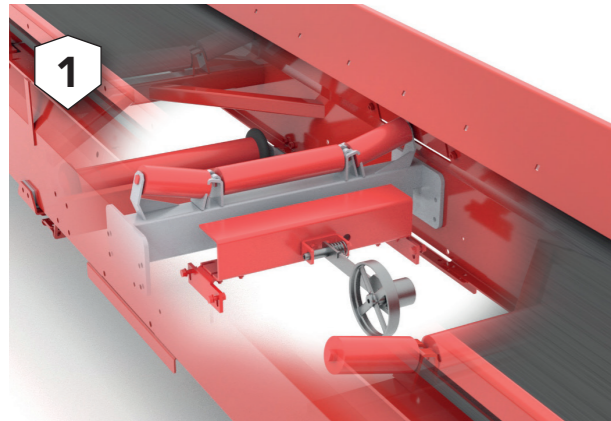
## CONVEYOR BELT STRUCTURE

The basic structure of conveyor belts is standardised and includes a robust frame, a drive and reversing unit, support rollers, tensioning elements as well as the belt. Although this structure is predefined, conveyor belts have the flexibility to adapt to the specific needs and preferences of customers. It is possible to integrate additional options to meet specific requirements. These customisation options make conveyor belts extremely versatile and permit optimal integration into a very wide range of production processes.



- |                       |                        |                           |
|-----------------------|------------------------|---------------------------|
| 1. Inner scraper      | 7. Drive drum          | 13. Conveyor belt chassis |
| 2. Reversing drum     | 8. Belt scraper        | 14. Cover, reversing end  |
| 3. Support rollers    | 9. Cover, drive end    |                           |
| 4. Lower belt rollers | 10. Servicing platform |                           |
| 5. Covers             | 11. Belt               |                           |
| 6. Drive unit         | 12. Protective cover   |                           |

## OPTIONS



1

### MEASURING SYSTEMS

We offer various types of measuring system, e.g. belt scales or volume measuring system. Belt scales record the weight of the material, while volume measuring systems determine the volume independent of shape and consistency.

2

### BELT QUALITY

We have various options for the belts such as smooth or cleated belts. The choice of belt depends on the feed material and the transport conditions.

3

### DUST PREVENTION

Various water sprays are positioned strategically to minimise the production of dust so as to ensure effective dust suppression.

4

### BELT CENTRING

Belt centring can be achieved by means of various integrated components. These elements work together to keep the belt in the optimal position and to ensure stable, centred running.

5

### SCRAPERS

Scrapers are crucial components on conveyor belts and are used to remove residue or material deposits from the conveyor. They ensure the surface of the conveyor belt is clean, which improves the efficiency of the transport and reduces wear.

7

### MAGNETIC DRUM

Ferrous metal discharge is further improved and the quality of the crushed material increased by using a magnetic drum.

6

### DRIVE SYSTEM

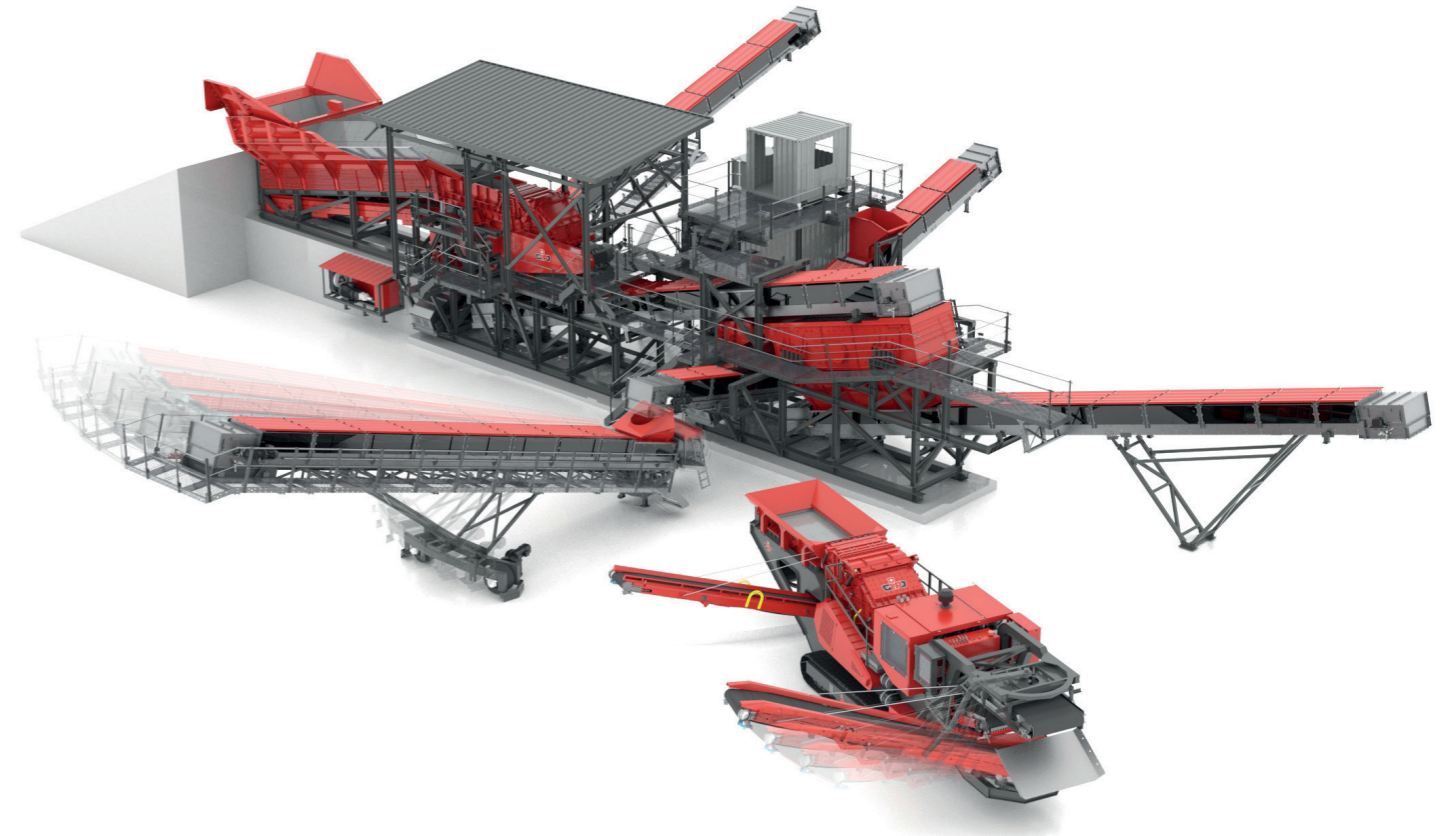
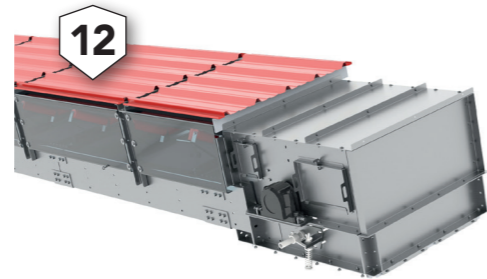
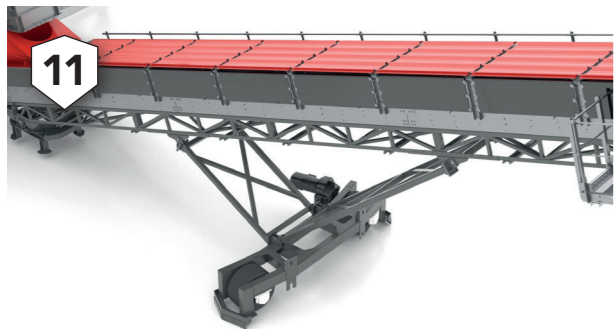
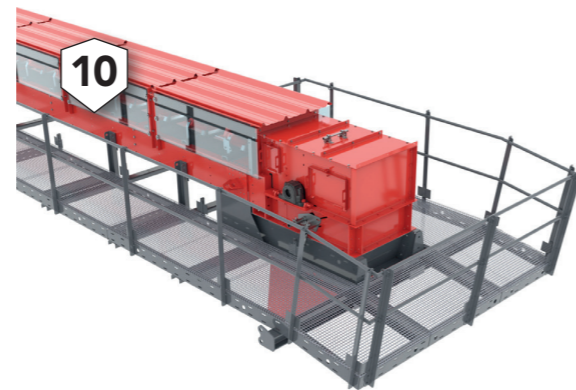
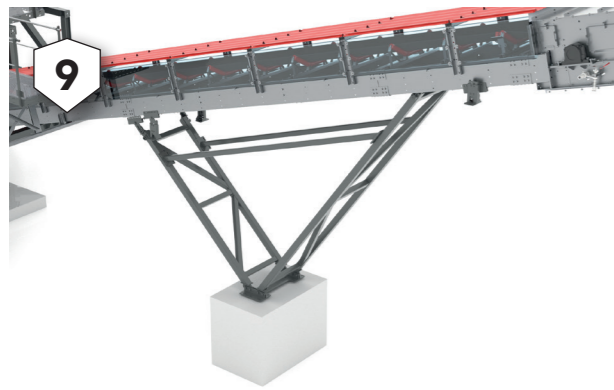
Various drive systems are available for our conveyor belts. These include hydraulic and electrical variants with their specific advantages and application areas.

8

### SPECIAL SOLUTIONS

From the reinforced transfer variant, special dimensions to colour sorting – GIPO AG offers a suitable solution for every application.

## OPTIONS



Whether the conveyor belt is to be folded for transport, rotated or equipped with additional options – GIPO AG covers all your needs.

### 9 SUPPORTS

Conveyor belt supports are crucial for the stability and reliability of long conveyor belts. They distribute the weight evenly and minimise loads on the structure.

### 10 SERVICING PLATFORM

The platforms improve accessibility, make servicing work easier and contribute to the safety of the personnel. They provide stable, raised working areas that can be fitted on both sides as well as around the ends.

### 11 SUPPORT WITH WHEELS

A support with wheels is used to choose flexibly where the material is discharged and to transport the material precisely to the heap.

### 12 SAFETY GUARD

Safety guards are installed both to reduce the amount of dust produced and to enhance safety.

- **Efficiency:** Automation increases the speed of production
- **Cost effectiveness:** Reduces labour costs, optimises production
- **Space saving:** Utilises space in production facilities efficiently
- **Safety:** Minimises the risk of industrial accidents
- **Precision:** Guarantees consistent, exact material motion
- **Adaptability:** Adapts flexibly to different production requirements

## CONVEYOR BELT OPTIONS

Conveyor belts are available with various cross-sections and lengths and with additional customer options. They can be adapted to the needs and situations in different applications. Thanks to this variety, flexible adaptation to all transport and working conditions is possible.



**GIPO AG**  
Industriegebiet See, Zone C  
Kohlplatzstrasse 15  
CH-6462 Seedorf

T +41 41 874 81 10  
info@gipo.ch  
www.gipo.ch  
Schweiz/Switzerland/Suisse



Figures and text are for information only and may include options.  
Subject to technical change. Performance data are dependent on  
the application conditions.